

LamiGraf



3119-201

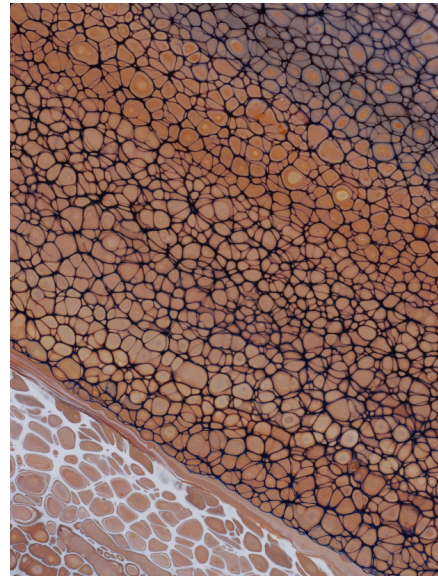
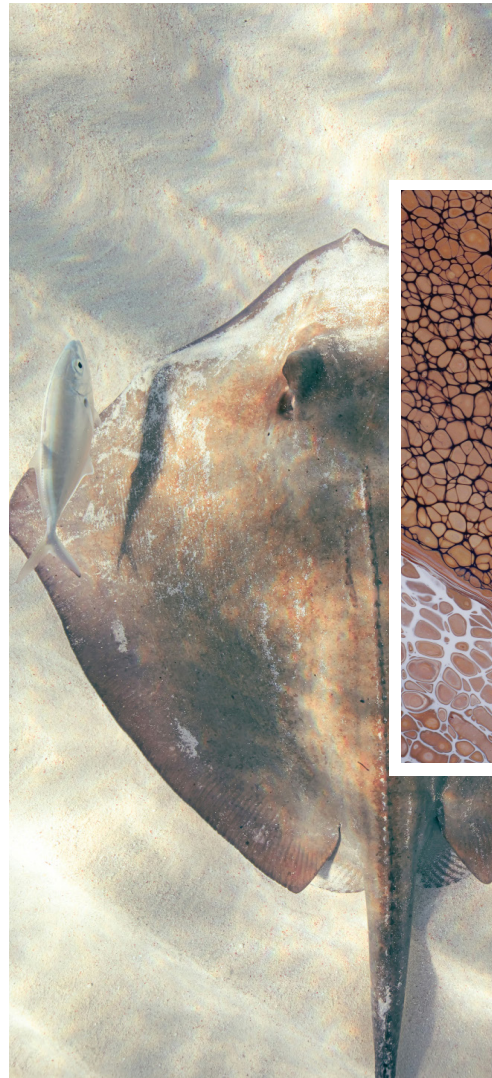
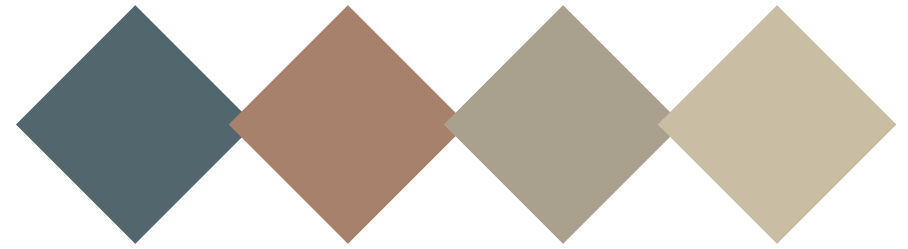
Rayskin

3119-202

3119-203

3119-204

Organic
Unique
Vibrant



Andromeda

Similar products:



Dallas - 3006

· Expressive modern surface ·

Born from the unexpected, Rayskin is a decor inspired by the textured skin of a fish. It transforms organic irregularity into a bold, avant-garde surface. Its design features inverted, small spherical forms, creating a playful yet tactile rhythm that draws the eye and invites touch. The use of metallic ink adds a futuristic sheen, elevating the texture with light-catching depth and dimension. Rayskin is unapologetically modern—fun, experimental, and full of character.

Finishes:

Top Mat Soft
Top Velvet



Metallic Effect

Technical characteristics:

↔ 1300 mm ↑↓ 2200mm 🗑 2